

Your Day-Of Cheat Sheet

Site Coordinators

This sheet will help you navigate your shoreline cleanup from start to finish on the day-of. It's packed with stats to share with your team, and trivia to engage your participants at the cleanup. Enjoy!



SAMPLE OPENING SPEECH

Welcome Your Team

Hi,

My name is _____, thank you for joining today's shoreline cleanup.

I would like to begin by acknowledging the land on which we have gathered... *(who are the Indigenous peoples or traditional territory of your shoreline?)*

A bit of housekeeping before we start: be sure you have signed the Waiver Form, this is our home base, you can find (washrooms, water fountains, snacks etc.) ...

Today's cleanup is part of the Great Canadian Shoreline Cleanup, one of the longest running and largest volunteer-powered conservation cleanup programs in the country.

I wanted to lead a cleanup because... (i.e. to help keep my local beach clean, to help wildlife)

Some of the impacts of shoreline litter are...

Our team is making a difference by...

Here are the Safety tips... *(see last page)*

How to fill out the Data Card... *(see Data Card for instructions)*

Ok team! Group into small teams of 3 to 5.

Each small team should have: one bag/bucket and one data card. Everyone should have a pair of gloves.

Be sure to return to home base by ____ o'clock.

Let's cleanup!

WHAT IS A SHORELINE?

ANYWHERE LAND
CONNECTS TO WATER.



The impacts of shoreline litter

WORST OFFENDERS

Year after year cigarette butts, food wrappers, and single use items like shopping bags and plastic bottles are the most common items found on our shorelines.

THREATS TO WILDLIFE

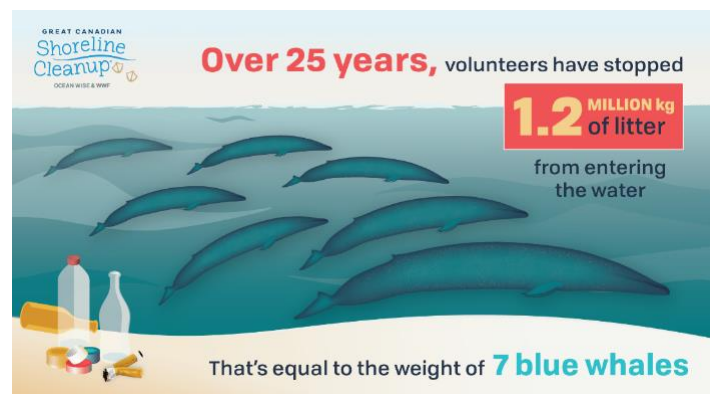
Local wildlife are in danger of becoming entangled or ingesting trash that has been left behind. This often results in serious injury, sometimes fatal.

TRASH TRAVELS

Trash can easily travel from a litter bin into a storm drain, and towards major waterways like a lake or river. If they reach the ocean, currents can carry litter far across the globe.

MICROPLASTICS

Plastic breaks up into smaller fragments that never disappear. These microplastics can attract toxins and enter the food chain, from phytoplankton all the way to whales and humans.



The Great Canadian Shoreline Cleanup is a national conservation partnership by Ocean Wise and WWF-Canada. Canadians can help protect wildlife from the impacts of shoreline litter by leading or joining a cleanup any time of the year, anywhere land connects to water.

Number of volunteers each year: over 60,000

Shoreline Cleanup Trivia!

- Q. Since 1994, volunteers in the Great Canadian Shoreline Cleanup have managed to collect a total of 1.2 million kg of litter. That weight is equivalent to: **A) 100 giraffes B) 7 blue whales C) 14 rhinos**
- Q. Cigarette butts have plastic in them. **A) True B) False** (Answer: True. Cigarette butts contain a type of plastic called cellulose acetate. Cigarette butts are one of the most common litter items found.)
- Q. The 4 R's we should follow include Reduce, Reuse, Recycle and: **A) Refuse B) Realign C) Re-Do**
- Q. How many pieces of plastic are estimated to be floating in the ocean right now: **A) 4 million B) 2 billion C) 5 trillion** (Answer: C. An estimated 80% of marine litter is plastic. It's estimated there could be more plastic than fish (by weight) in the ocean by 2050.)
- Q. 80% of plastic in the ocean originates on land: **A) True B) False** (Answer: True. Trash travels, that's why it's so important that we stop litter in its tracks like we have here today!)

SAMPLE CLOSING SPEECH

Thank Your Volunteers

Thank you again for lending a hand at today's shoreline cleanup.

We weighed the litter and came in with _____ kg of trash...

We counted the bags and came in with _____ number of bags...

Can anyone guess the top item collected today?

I would love to know: What item did you find the most of? What was the most unusual item you found? Based on what you learned today, what is one thing you will do to continue your positive impact on the environment?

I would like to give a special thanks to _____ who helped with this event. (i.e. notable volunteers, community sponsors)

Congratulations everyone on your work!

Take your impact a step further; here are some ideas to reduce waste... (see *Change starts with action*)

I hope to see you all at the next cleanup!

Change starts with action

Did you know you can have an impact far beyond the shoreline? Get started with these tips for making small everyday changes that reduce the amount of litter in our environment.

REFUSE

Buy less and make smart purchases by saying no to excess packaging and single-use plastic items.



REDUCE

Reduce waste with reusable items like glass water bottles, metal straws and cloth bags. Focus on items made from sustainable materials.

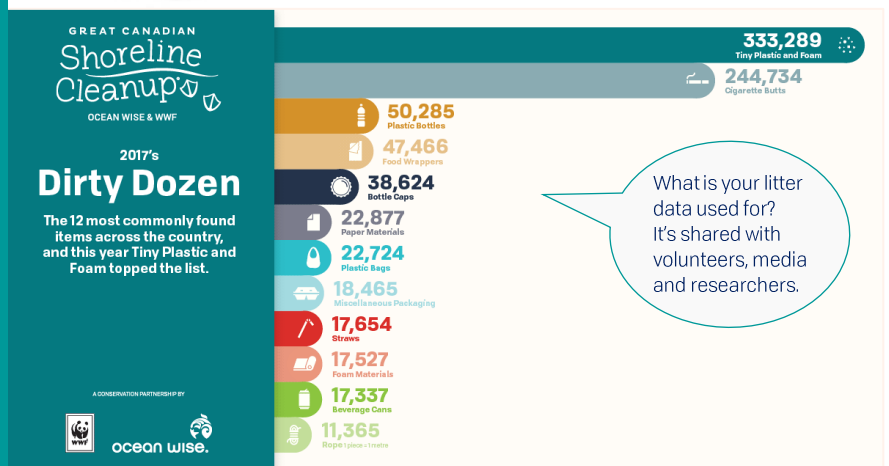


REUSE

Get crafty and reinvent items for new uses. Buy second hand products to give them an even longer life.

RECYCLE

Follow local municipal instructions for proper disposal using all waste streams like paper, plastic, organics, and electronics.



Share Your Photos and Cleanup Stats

/shorelinecleanup

@shorelinecleanup

@cleanshorelines

ShorelineCleanup.ca

CLEANUP SAFETY

1. **ALWAYS** wear gloves and proper footwear (no open-toe shoes).
2. **KNOW** where the first aid kit is located and keep a list of **EMERGENCY NUMBERS** close at hand.
3. All young children should be **SUPERVISED BY A RESPONSIBLE ADULT**.
4. **WATCH** your footing on slippery rocks & **NEVER** walk on loose terrain. Stay a safe distance from the water's edge.
5. **ALL** sharp or dangerous items found on the shoreline, including syringes and broken glass, are to be placed in a **SHARPS CONTAINER**. Never handle these items with bare hands.
6. **DO NOT REMOVE** large items which are too heavy to carry.
7. **DO NOT USE** your back when lifting heavy items and **ALWAYS** bend at knees.
8. **NEVER** approach any animal, dead or alive.
9. **DO NOT REMOVE** litter that has become part of the habitat.